



THE
SAPPHIRE
COSTA DEL SOL

THE MOST
EXTRAORDINARY
SEAFRONT ADDRESS IN ESTEPONA



VISION
LOCATION
THE PROJECT
THE SAPPHIRE
RESIDENCES
AMENITIES
DEFINING YOUR SPACE
THE FINEST DETAILS

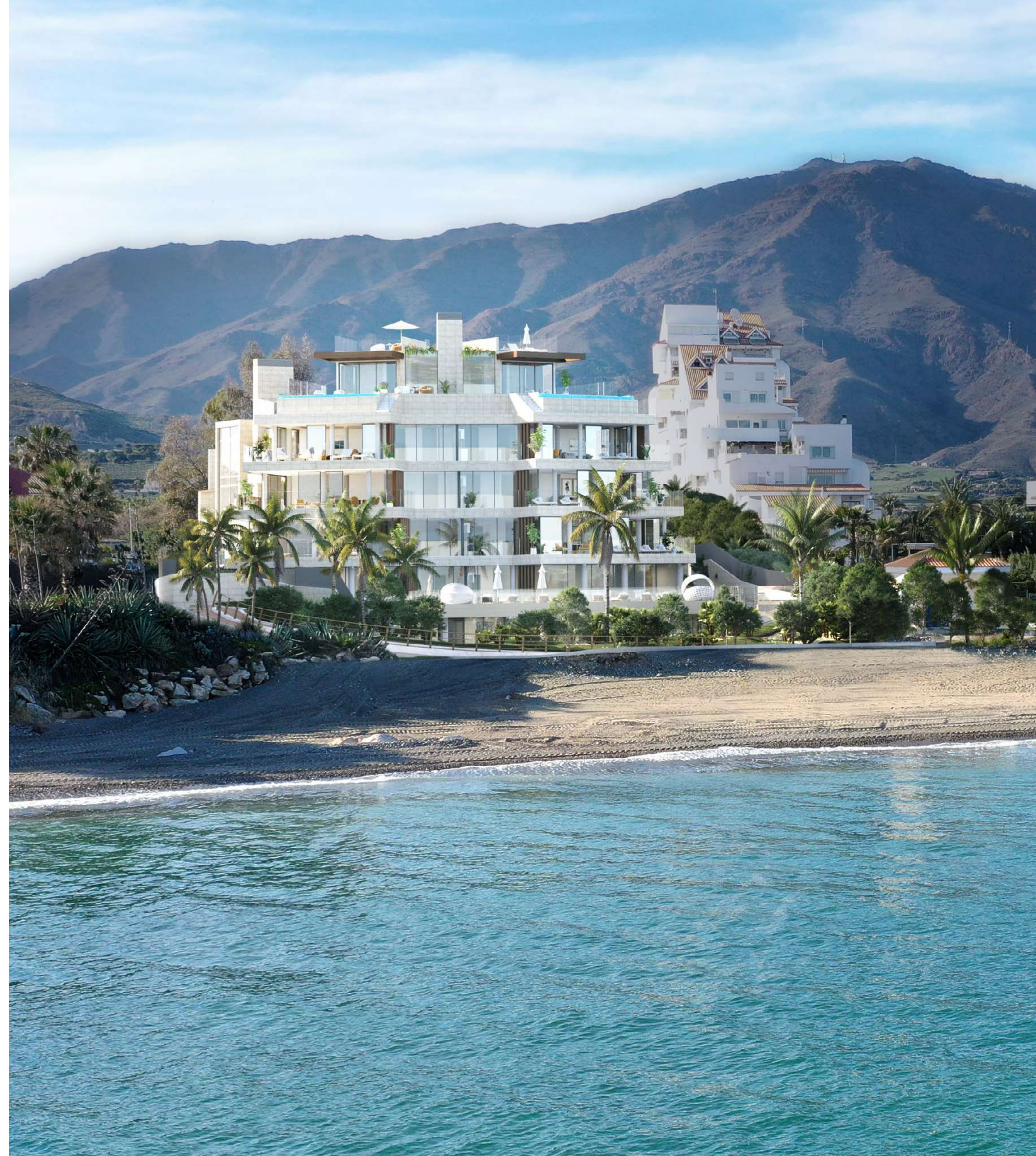
A Truly Exclusive Residential Development Concept

THE SAPHIRE COLLECTION

Featuring 15 exclusive prime masterpieces, **THE SAPHIRE** takes living to a whole new level of truly exceptional luxury.

On the shores of the Mediterranean, and nestled in nature's bounty, these magnificent homes enjoy direct access to the beach and stunning panoramic sea views—afforded from the impressive floor-to-ceiling picture windows—. All interior rooms offer a wealth of living space and give onto wrap-around private terraces, with some boasting an infinity swimming pool.

Designed and built to the highest of specifications—and featuring best-in-class finishes and state-of-the-art technology—THE SAPHIRE is an iconic, energy-efficient and impressive property in its own right.



VISION

The building's design draws the scheme closer to the sea,
thereby cementing strong ties with the ocean,
the undisputed protagonist of The Sapphire



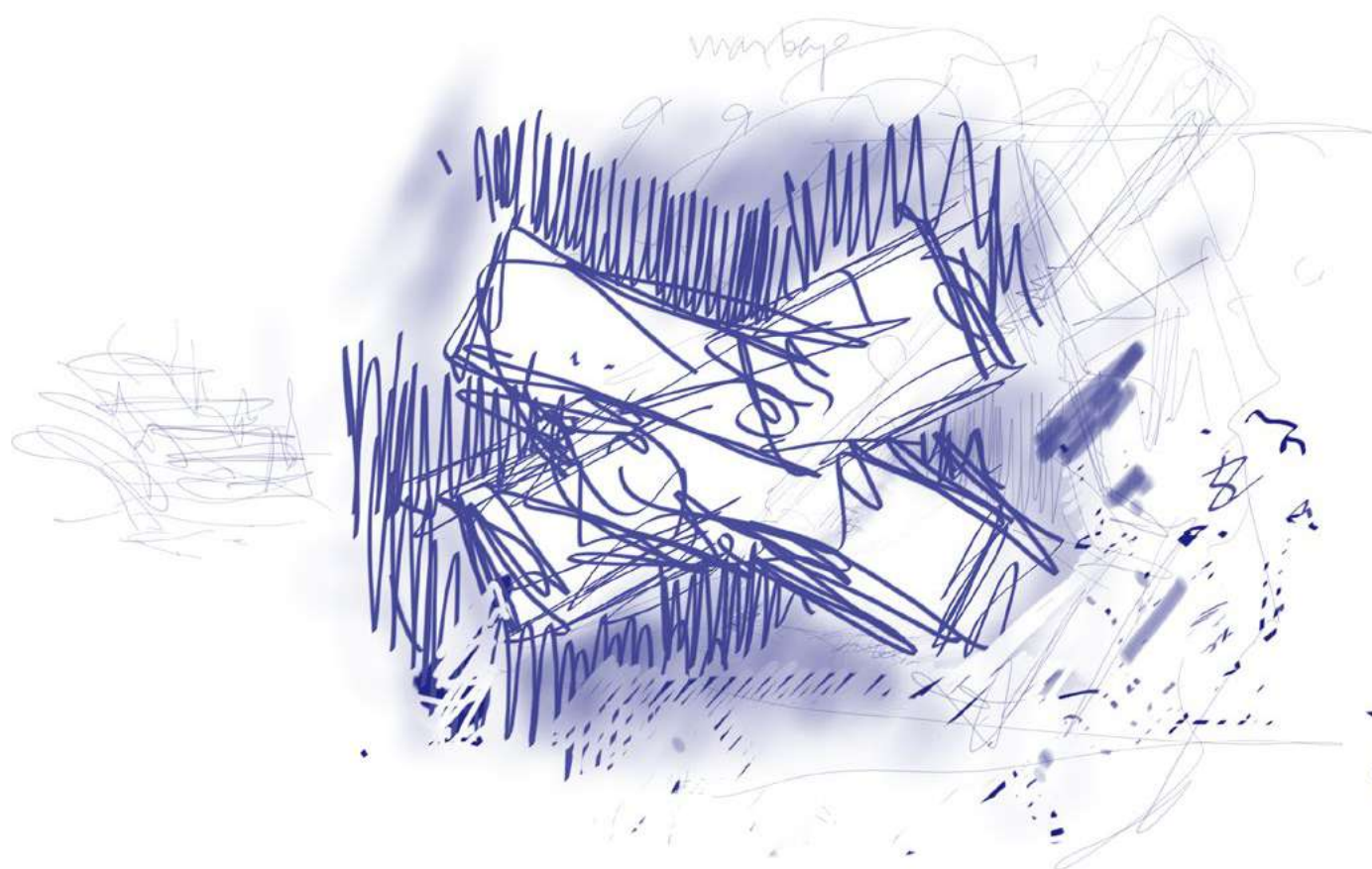
Concept design

AESTHETIC MOVEMENT AT ITS FINEST

Scheme's objective: sitting close to the town centre and benefitting from one of Estepona's last available prime beachfront locations, we have designed an unparalleled residential development drawing it closer to the sea, thereby cementing strong ties with the ocean, the undisputed protagonist. We have also made the most of the plot's existing grading to ensure the entire scheme faces onto the Mediterranean Sea.

Architecture: the project's design is intended to emulate the undulating movement of the sea and each element—floors, overhangs and recessed sections—is further envisaged in such a way as to afford spectacular sea views, all the way from the port of Estepona to the Rock of Gibraltar. In addition, the outdoor sun-drenched terraces ensure each property is unique and equally exclusive. Here, the soothing sound of the ocean will resonate and mark the rhythm of The Sapphire's lifestyle.

Glass has a pivotal role and affords the homes almost infinite views.



Move
By Arata



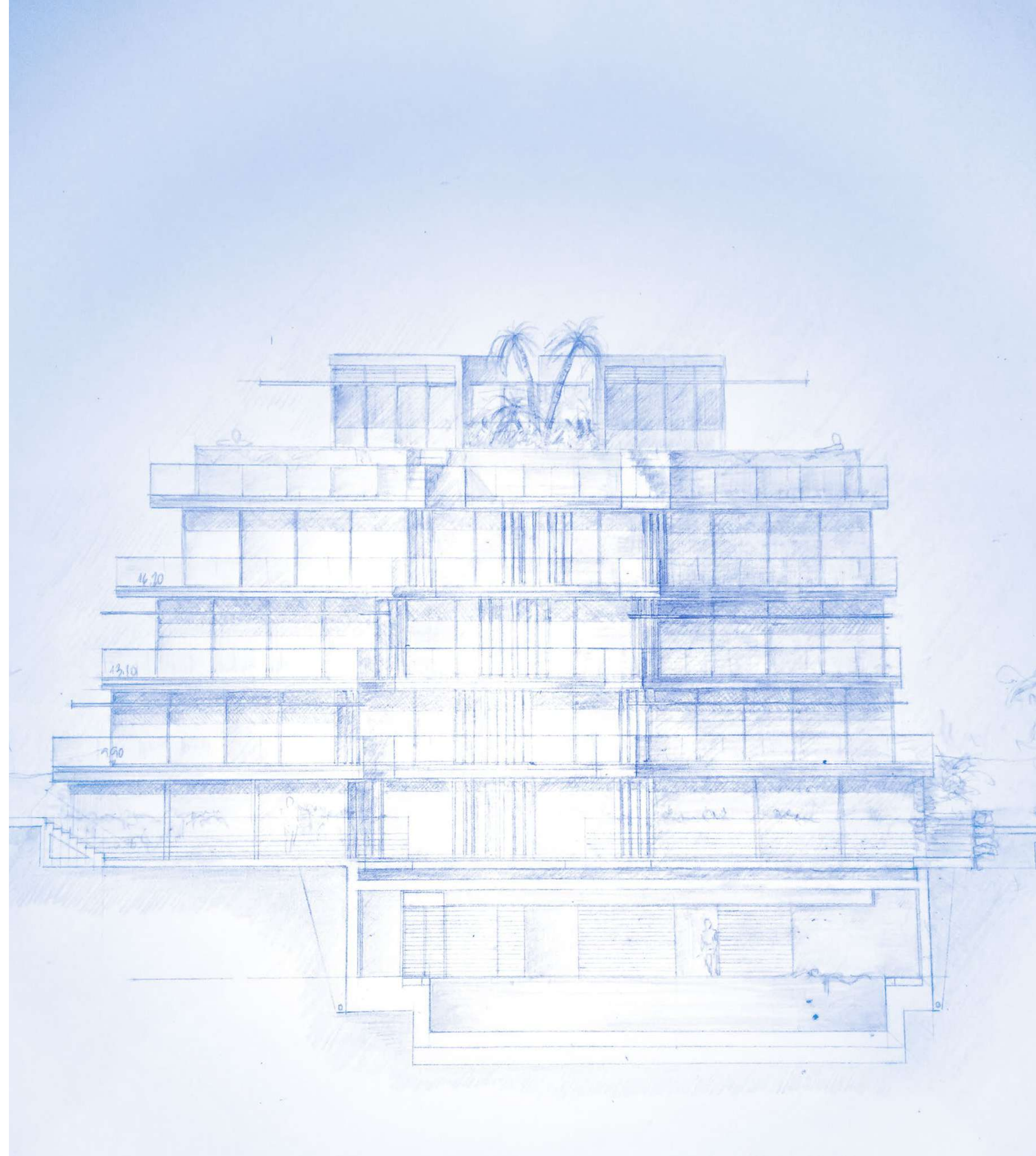
ARATA ARQUITECTURA

MOISÉS GARCÍA.

We are a team of talented and dedicated professionals led by MOISES GARCIA ARQUITECTO that seek to new challenges where we can apply the experience we have gained over 25 years.

INNOVATION, HUMBLENESS and the quest for BEAUTY are our key tenets.

Since its inception in 1999, Arata Arquitectura has undertaken a number of projects, among which The Sapphire, with an innovative scheme that samples our evolution. In this case It seeks total integration among the building, the occupant and the privileged environment in which it is located, deepening that relationship to the maximum through architecture.





ESTEPONA'S
MOST EXTRAORDINARY
OCENAFRONT ADDRESS

LOCATION

A place of serenity

THE
SAPHIRE
COSTA DEL SOL



Here is your chance to live by the sea

AN UNRIVALLED LOCATION

Enviably located at the Bay of Estepona, on the shores of the Mediterranean Sea, and at the foot of Sierra Bermeja, THE SAPPHIRE's much sought-after 15 homes benefit from direct access to the beach.

Estepona is just thirty minutes from downtown Marbella and one hour from Malaga Airport—midway between the Costa del Sol and Campo de Gibraltar—. This charming town has a diverse sports and gastronomic offering, and provides a wealth of cultural and leisure pursuits.

The area features some of the world's renowned golf courses, such as Finca Cortesín, and is ideal for water sports, such as diving, sailing or surfing. Estepona is also home to a copious amount of walking and hiking trails that will work a treat for sports lovers and health-conscious people alike.

The Sierra de Estepona is the perfect place to restore links with nature, and affords stunning views of the Costa del Sol, the coast of Morocco and Gibraltar. With a bewildering variety of eateries, here foodies will be able to revel in the fine Mediterranean cuisine.









01_Estepona

02_Marina

03_Valle Romano Golf

04_Guadalobón Beach

05_Del Cristo Beach

06_Rada Beach

07_Punta de la Doncella

08_Costa Natura Beach

09_Estepona Golf

10_Punta de los Mármoles

 THE SAPPHIRE

 5/10 min. 

THE PROJECT

Unique architecture, magnificent unobstructed views and outstanding amenities, where the expression of modern living has found its natural home.



The Sapphire

MUCH MORE THAN JUST A BUILDING

"The project's design is intended to emulate the undulating movement of the sea (...) Here, the soothing sound of the ocean will resonate and mark the rhythm of The Sapphire's lifestyle".

THE SAPPHIRE is much more than just a building; it is the ultimate landmark at the Bay of Estepona. Home to 15 magnificent residences overlooking the sea, the scheme's flowing layout brings together architecture, design and natural surroundings.

Distinctive living, outstanding amenities, and unobstructed 180 degree views of the Mediterranean Sea and the Bay of Estepona.



EXCLUSIVITY



QUALITY



BEACH



LEISURE



GOLF



YEAR-ROUND
SUNSHINE



19 ° C



ACCESSIBILITY



GOURMET AREA



ENERGY RATING
(EECN)



SPA



GYM



OUTDOOR POOL



INDOOR POOL



PANORAMIC
TERRACES



THE
LUXURY
OF THE SUNSET



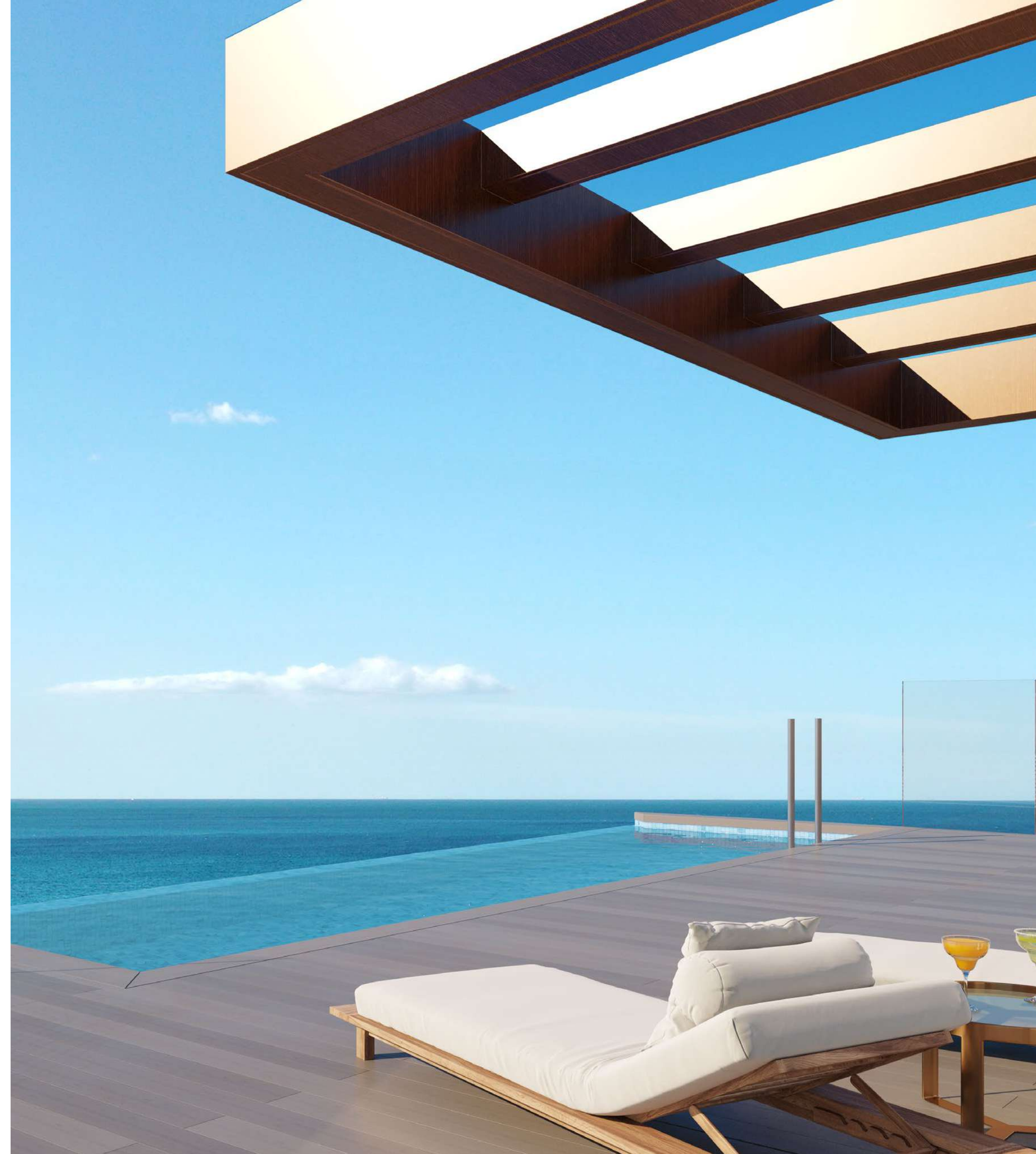
The Collection

RESIDENCES

15 magnificent homes featuring luxury villas and desirable properties arranged over one, two and three floors, boasting floor-to-ceiling picture windows that afford gorgeous unobstructed views, private infinity swimming pool, and much more. The properties layout offers a wealth of space and features generous sized panoramic terraces, which are perfect for outdoor living.

Only 2 units available, key ready.

- Seaside Sapphire P1-A
- Seafront Sapphire P1-C





BESPOKE DETAILS, FLOOR-TO-CEILING PICTURE WINDOWS AND PANORAMIC TERRACES









GAGGENAU





Carefully designed bathrooms with extra large format tiles and highest quality Dornbracht taps in bathrooms.

DORN
BRACHT



Enjoy your home to the fullest

EXCLUSIVE AMENITIES AND SERVICES

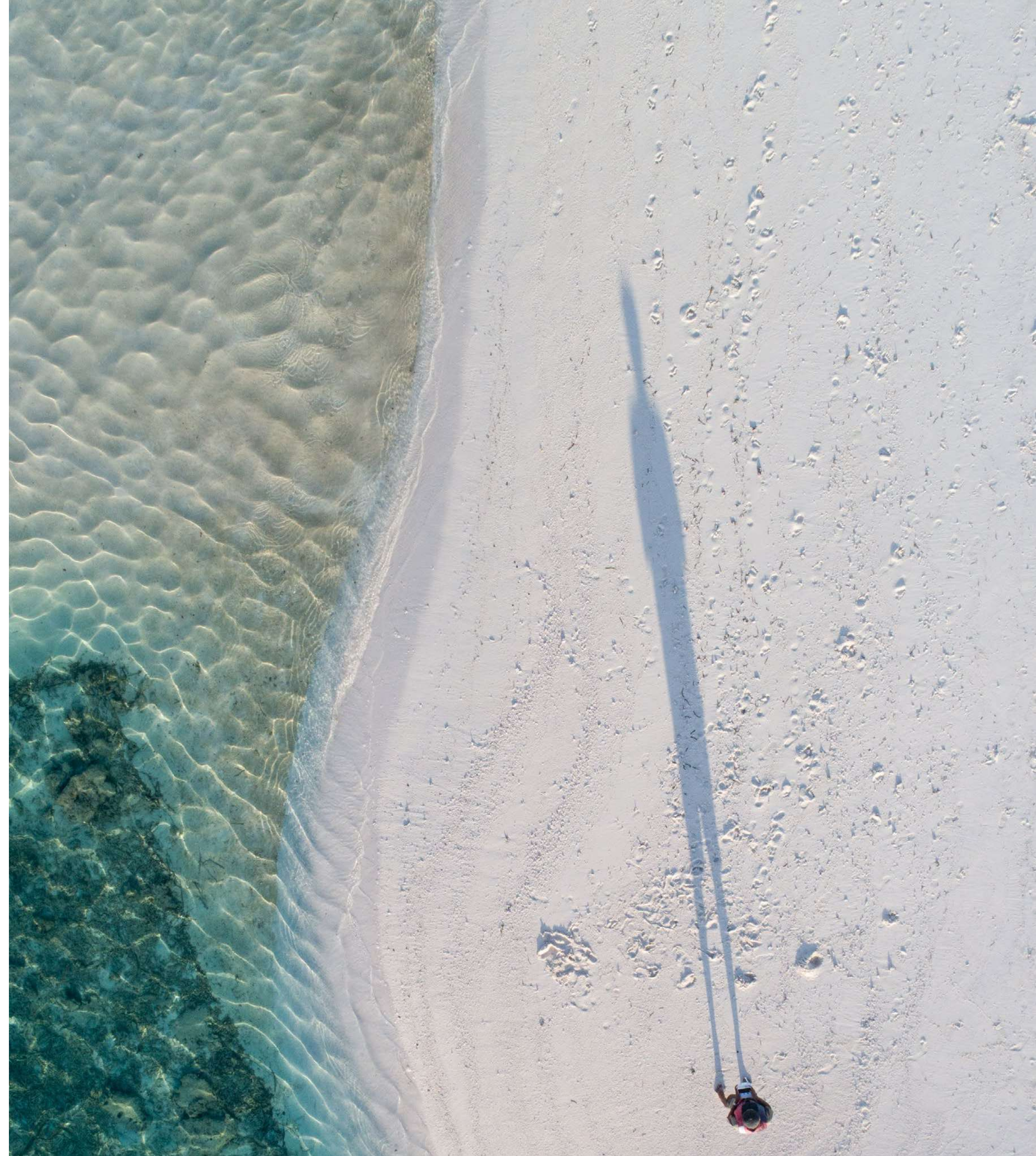
The 15 exclusive and most coveted homes at THE SAPPHIRE are nestled in nature's bounty and benefit from excellent sports facilities. The remarkable array of amenities on offer includes the **HEALTH & WELLNESS CENTER**, an imposing facility featuring fitness area, gym, sauna, and a 54-foot indoor swimming pool.

THE SAPPHIRE CLUB comprises gourmet room, and a pleasant summer lounge that gives onto the landscaped garden. The **BEACHFRONT POOL & SUN DECK** offers a one-of-a kind infinity swimming pool that looks out on the sea, and a large split level sun deck that benefits from direct access to the beach and is ideal for entertaining.

The offering is rounded off with a panoramic lift that stops at all floors and **CONCIERGE** service to make day-to-day life easier and more comfortable.

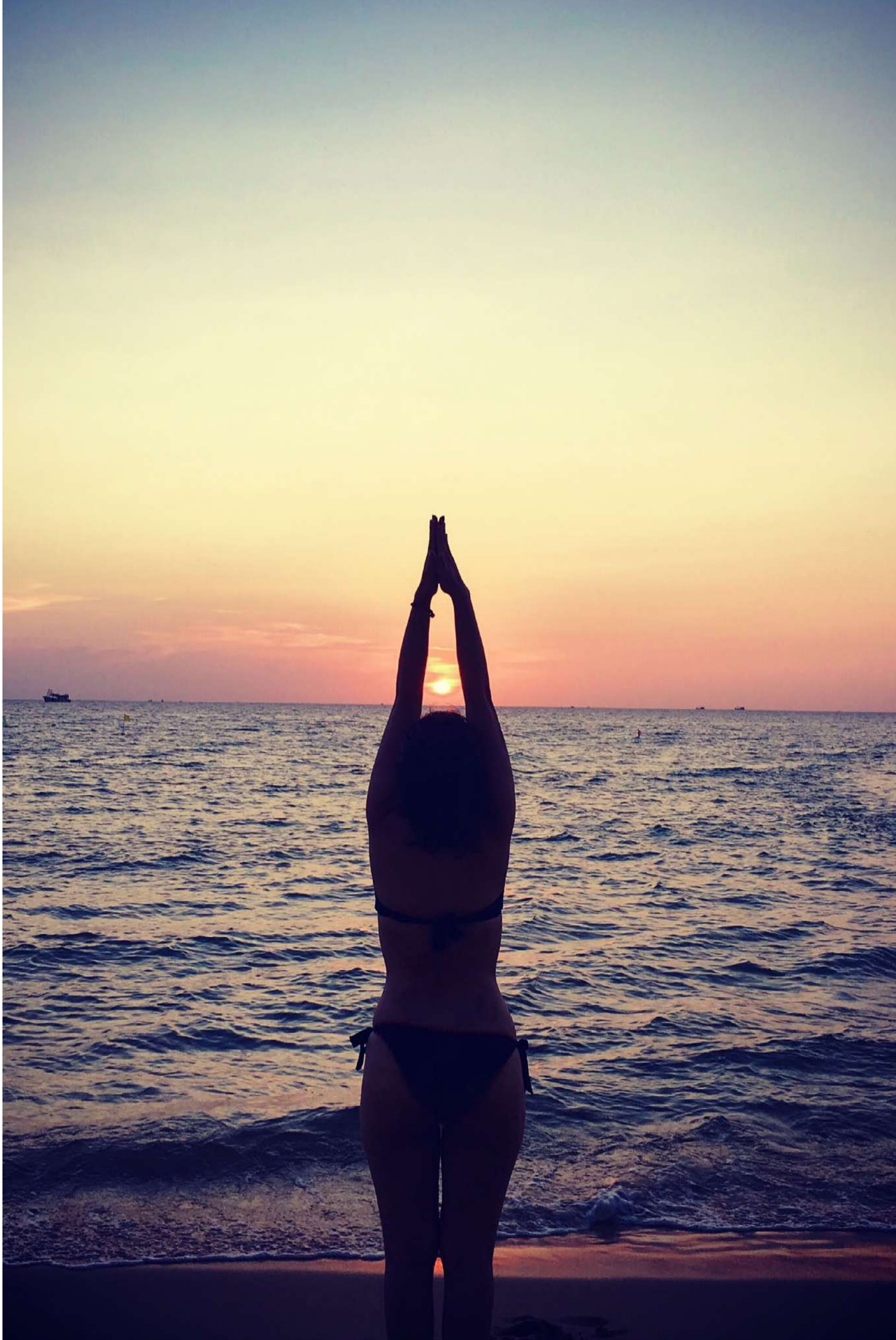
And much more...

- Parking
- Storage room
- Oasis and sculpture garden



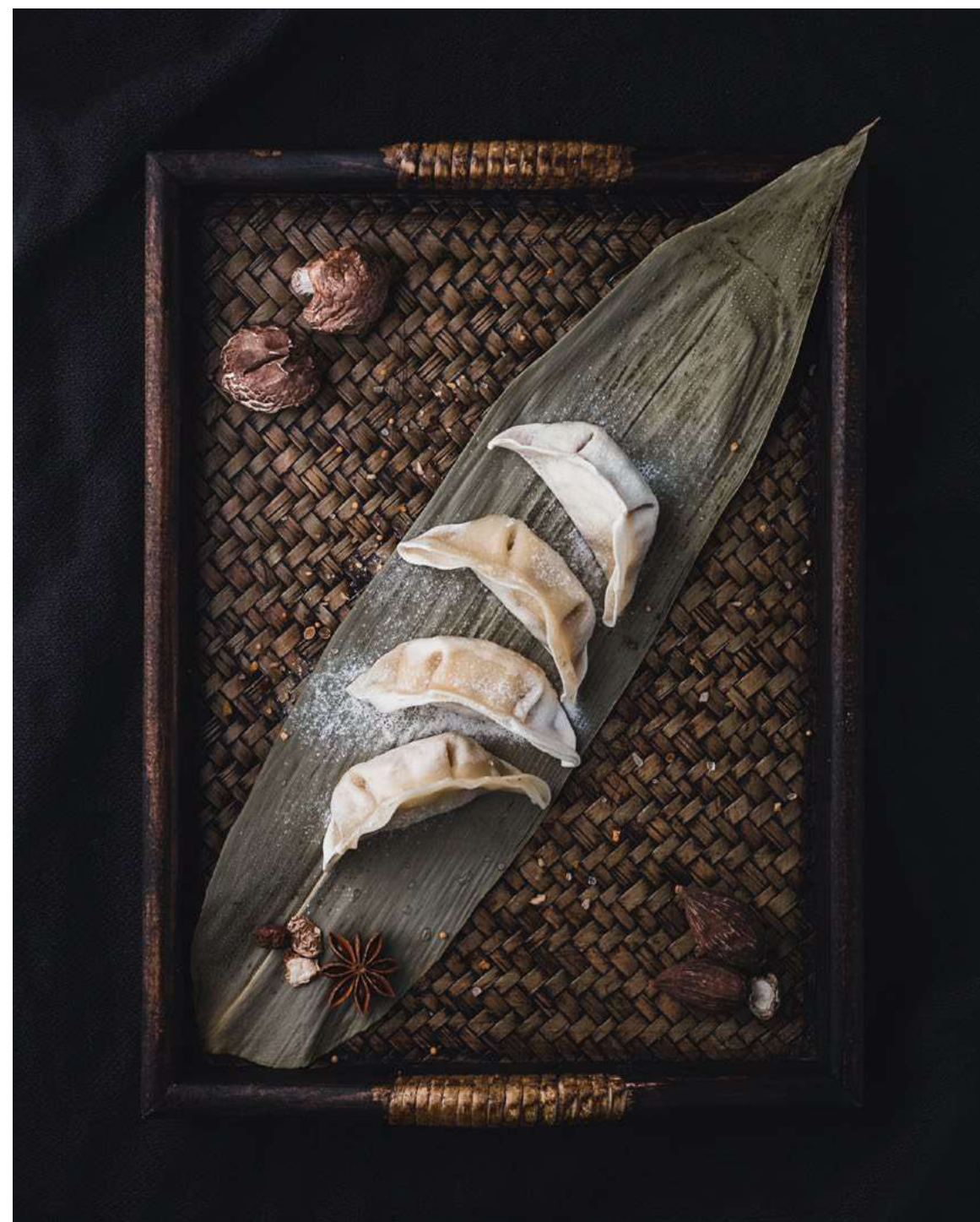


THE
SAPPHIRE
HEALTH & WELLNESS
CENTER





THE SAPPHIRE CLUB: GOURMET ROOM, AND BEAUTIFULLY LANDSCAPED SUMMER LOUNGE

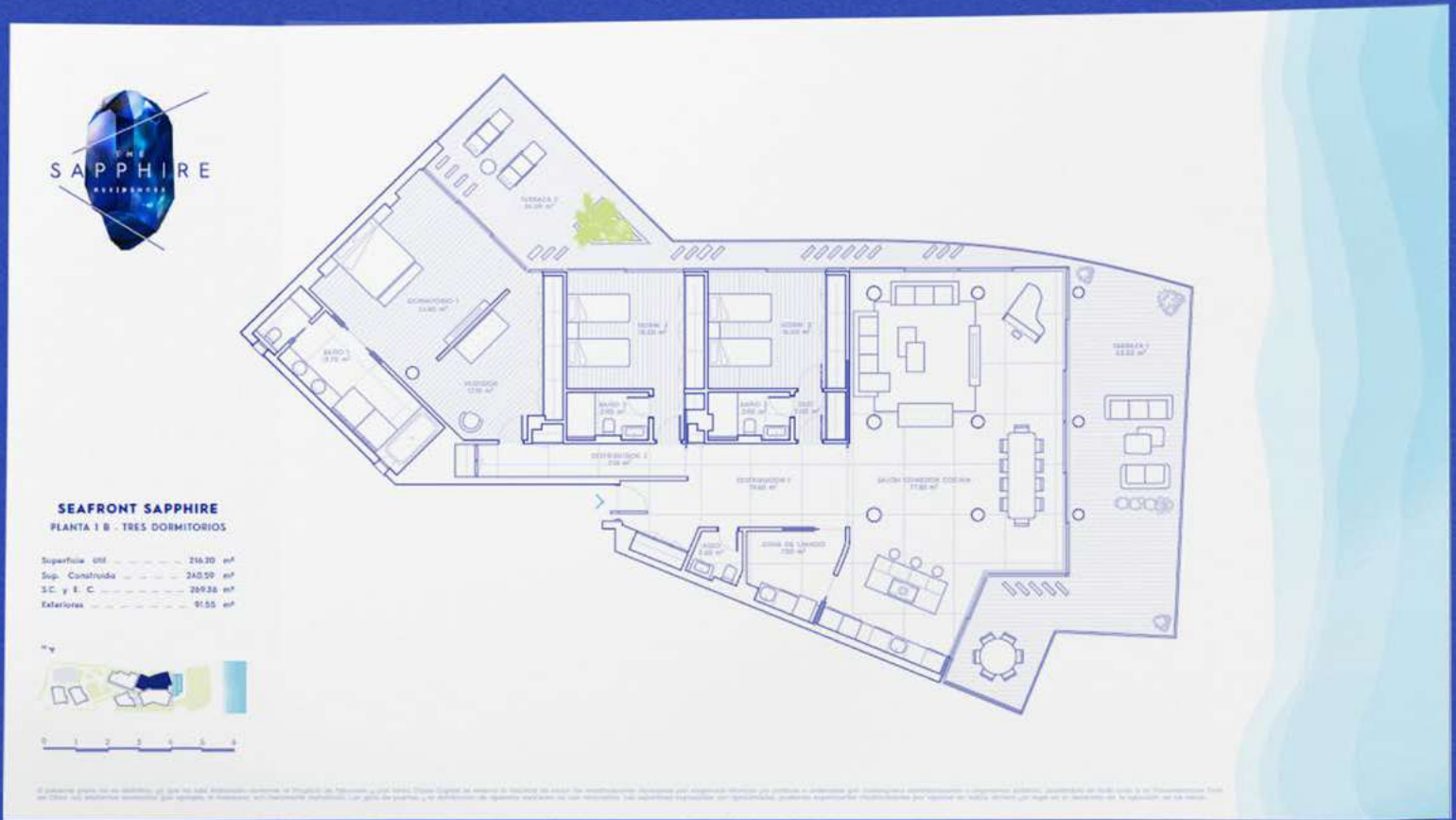


PRIVATE PATH FROM
THE SAPHIRE
CONNECTING TO
POOL & BEACH



DEFINING YOUR SPACE

This enviable beachfront address, composed of spacious floor plans equipped with the very best brands, guaranteeing the highest levels of quality.



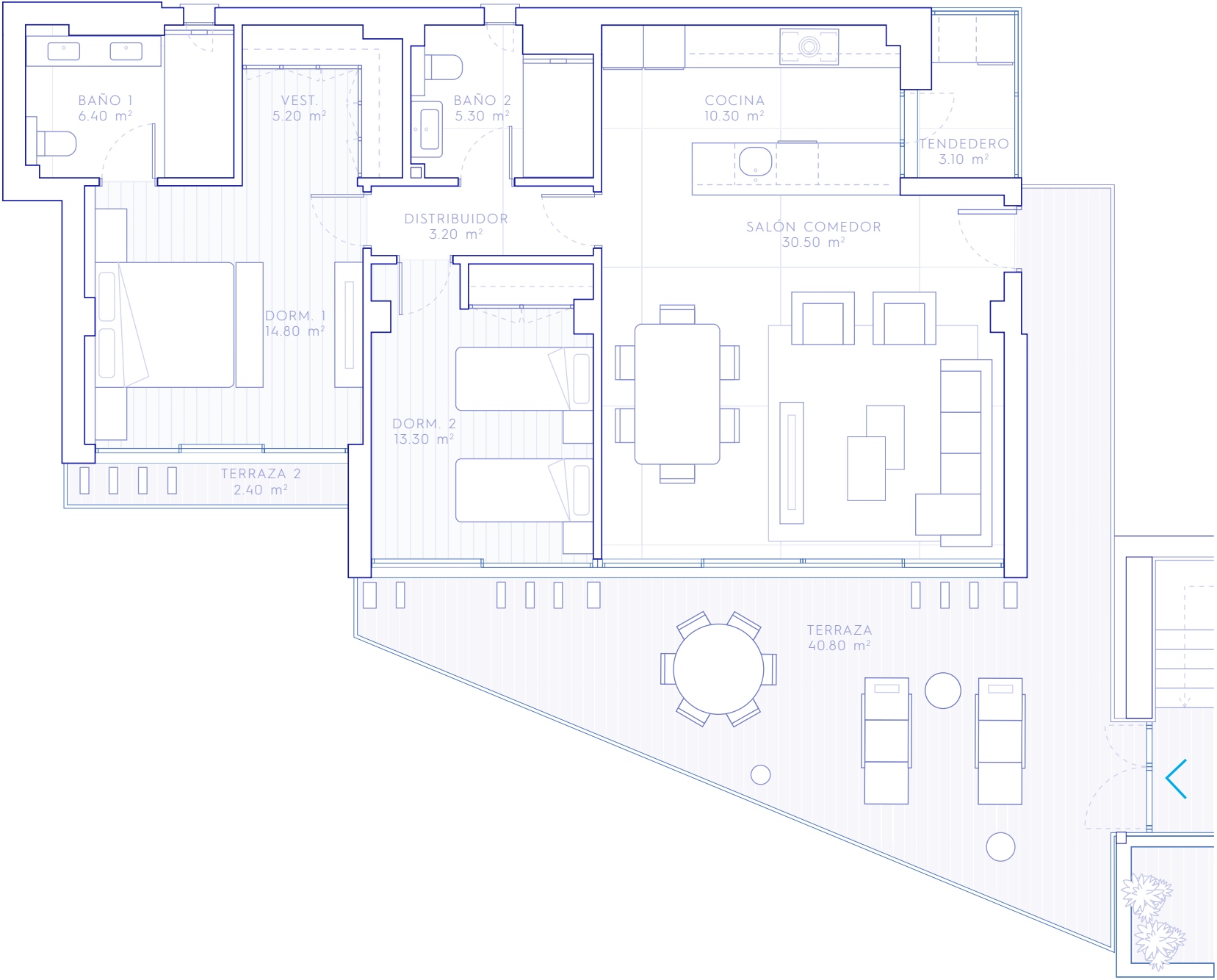
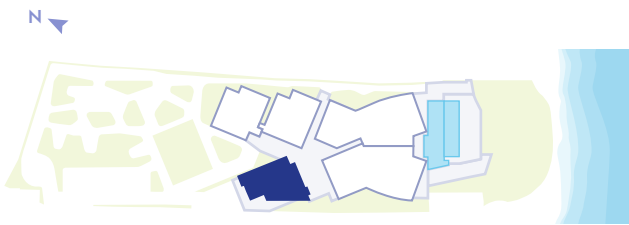
P L A N T A P R I M E R A



SEASIDE SAPPHIRE

PLANTA 1 A · DOS DORMITORIOS

Superficie Útil	92.05	m²
Sup. Construida	108.74	m²
S.C. y E. C.	122.36	m²
Exteriores	42.96	m²

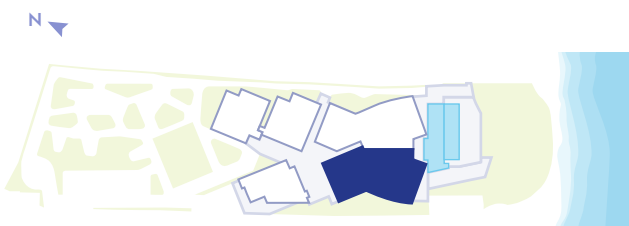


El presente plano no es definitivo, ya que ha sido elaborado conforme al Proyecto de Ejecución y, por tanto, Dazia Capital se reserva la facultad de incluir las modificaciones necesarias por exigencias técnicas y/o jurídicas u ordenadas por cualesquiera administraciones u organismos públicos, ajustándolo en todo caso a la Documentación Final de Obra. Los elementos accesorios (por ejemplo, el mobiliario, son meramente ilustrativos). Los giros de puertas y la distribución de aparatos sanitarios no son vinculantes. Las superficies expresadas son aproximadas, pudiendo experimentar modificaciones por razones de índole técnica y/o legal en el desarrollo de la ejecución de las obras.



SEAFRONT SAPPHIRE
PLANTA 1 C · TRES DORMITORIOS

Superficie Útil	210.00	m²
Sup. Construida	232.77	m²
S.C. y E. C.	261.92	m²
Exteriores	92.84	m²



El presente plano no es definitivo, ya que ha sido elaborado conforme al Proyecto de Ejecución y, por tanto, Dazia Capital se reserva la facultad de incluir las modificaciones necesarias por exigencias técnicas y/o jurídicas u ordenadas por cualesquiera administraciones u organismos públicos, ajustándolo en todo caso a la Documentación Final de Obra. Los elementos accesorios (por ejemplo, el mobiliario, son meramente ilustrativos). Los giros de puertas y la distribución de aparatos sanitarios no son vinculantes. Las superficies expresadas son aproximadas, pudiendo experimentar modificaciones por razones de índole técnica y/o legal en el desarrollo de la ejecución de las obras.