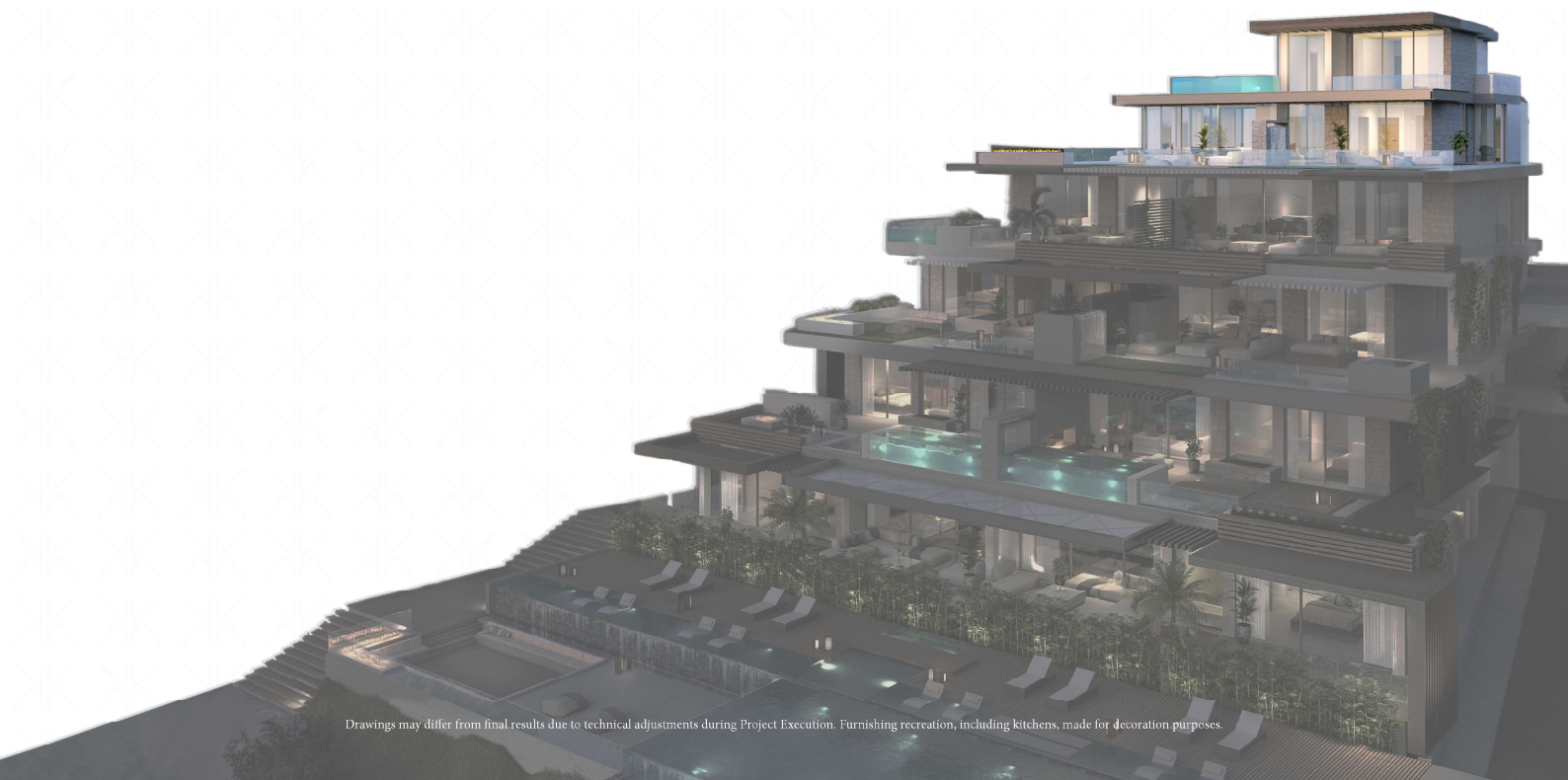
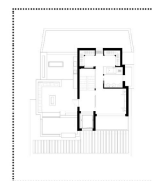
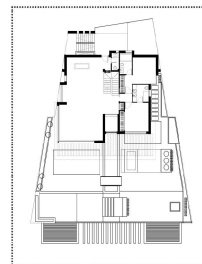
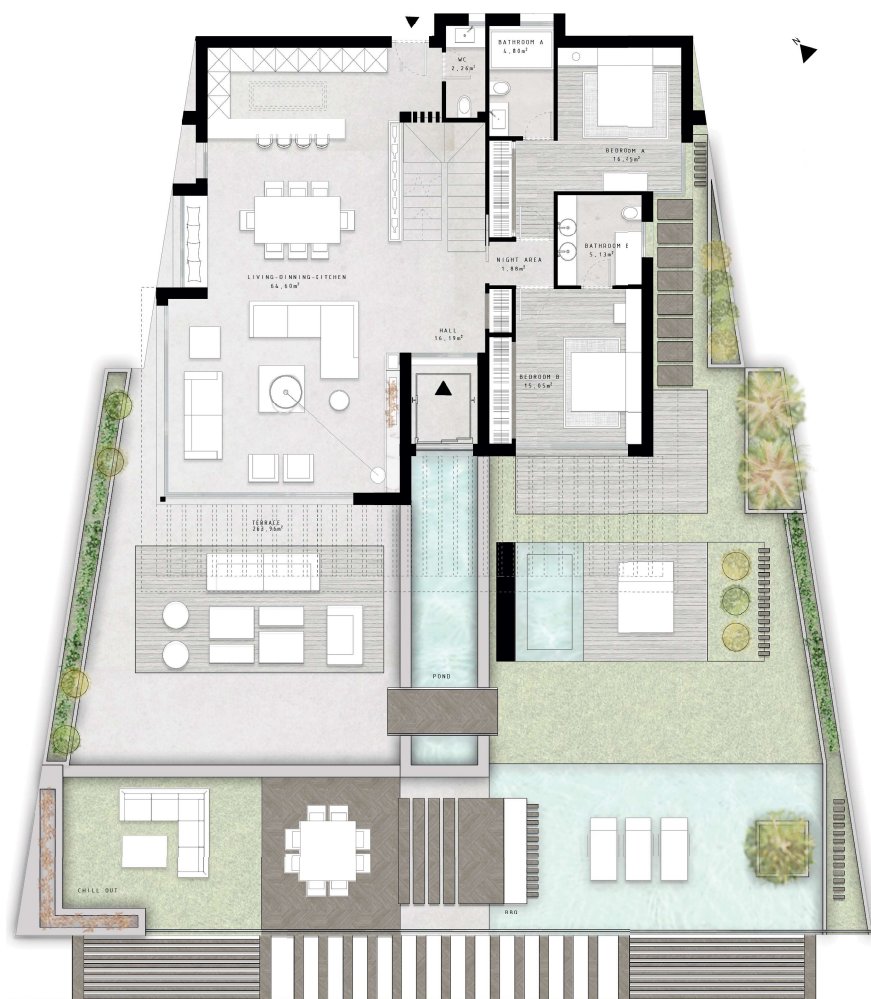


VILLA STELLA

PENTHOUSE, level 1



Drawings may differ from final results due to technical adjustments during Project Execution. Furnishing recreation, including kitchens, made for decoration purposes.



VILLA STELLA
floor +2

PENTHOUSE, LEVEL 1

Interior: 145,83 m²
Terrace: 263,96 m²

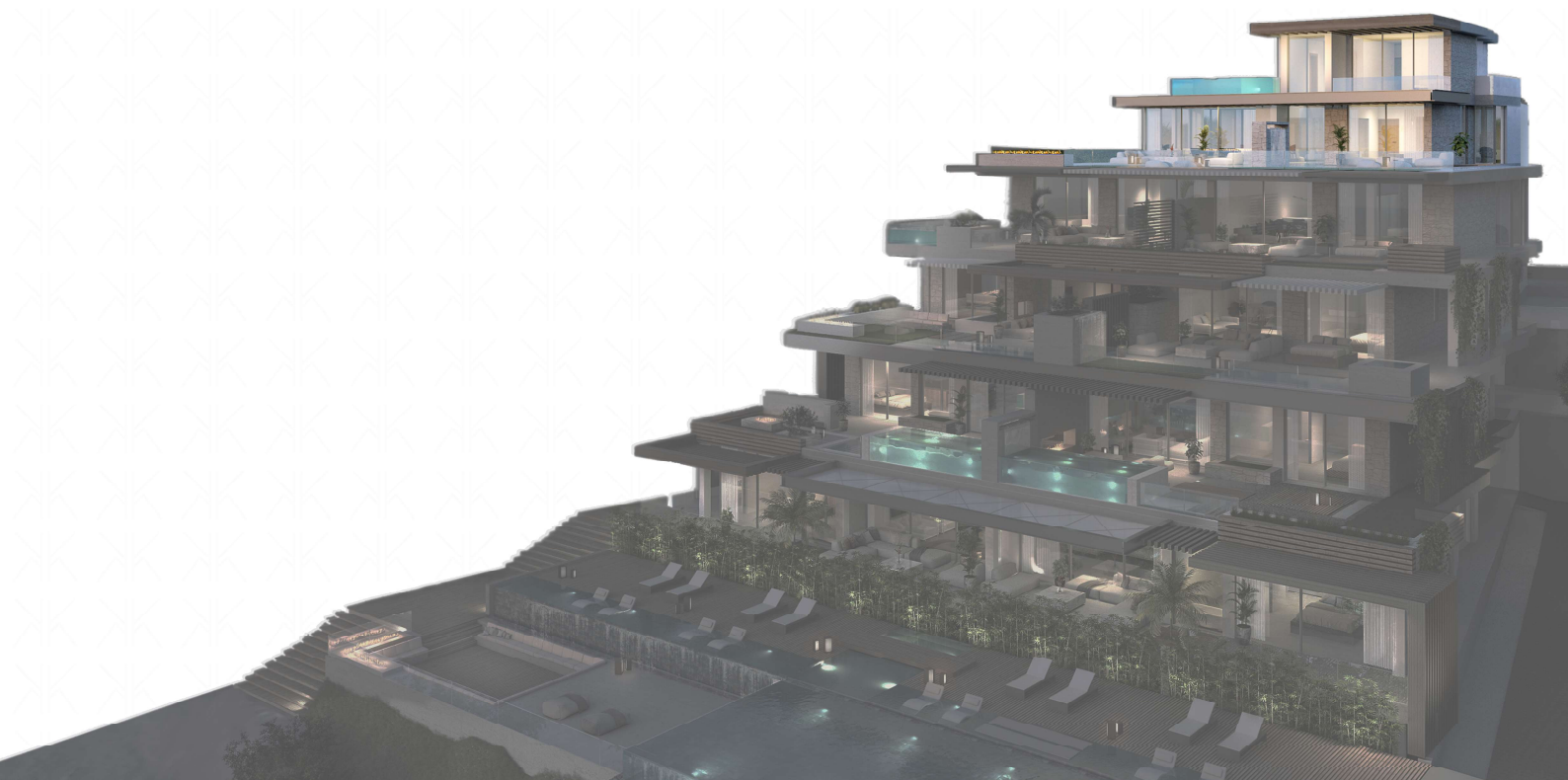
TOTAL BUILT SURFACE LEVEL 1: 409,79 m²



Drawings may differ from final results due to technical adjustments during Project Execution. Furnishing recreation made for decoration purposes.

VILLA STELLA

PENTHOUSE, level 2

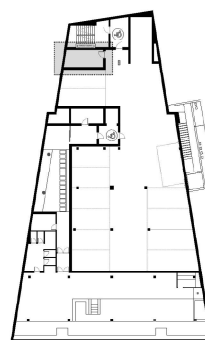




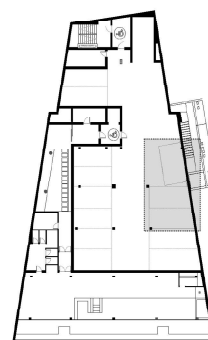
PENTHOUSE, LEVEL 2

Interior: 57,47 m²
Terrace: 80,17 m²

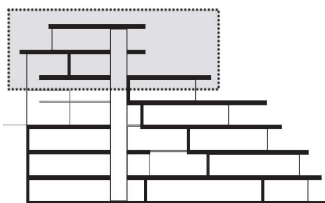
TOTAL BUILT SURFACE LEVEL 2: 137,64 m²



STORAGE ROOM
floor -3



GARAGE
floor -3



VILLA STELLA

Penthouse

Interior: 203,30 m²
Terrace: 344,13 m²

TOTAL BUILT SURFACE: 547,43 m²

* Usable Surface according to Real Decreto 218/2005: 349,25 m²

Storage room: 12,84 m²

Garage 1: 32,10 m²

Garage 2: 18,63 m²

*This apartment come with three garage parking spaces.

Mediterranean Sea

Drawings may differ from final results due to technical adjustments during Project Execution. Furnishing recreation, including kitchens, made for decoration purposes.